

Search

Solutions (<http://domain.com/solutions>)

Simulation & Design Tools (http://www.linear.com/solutions/Simulation_*_Design_Tools)

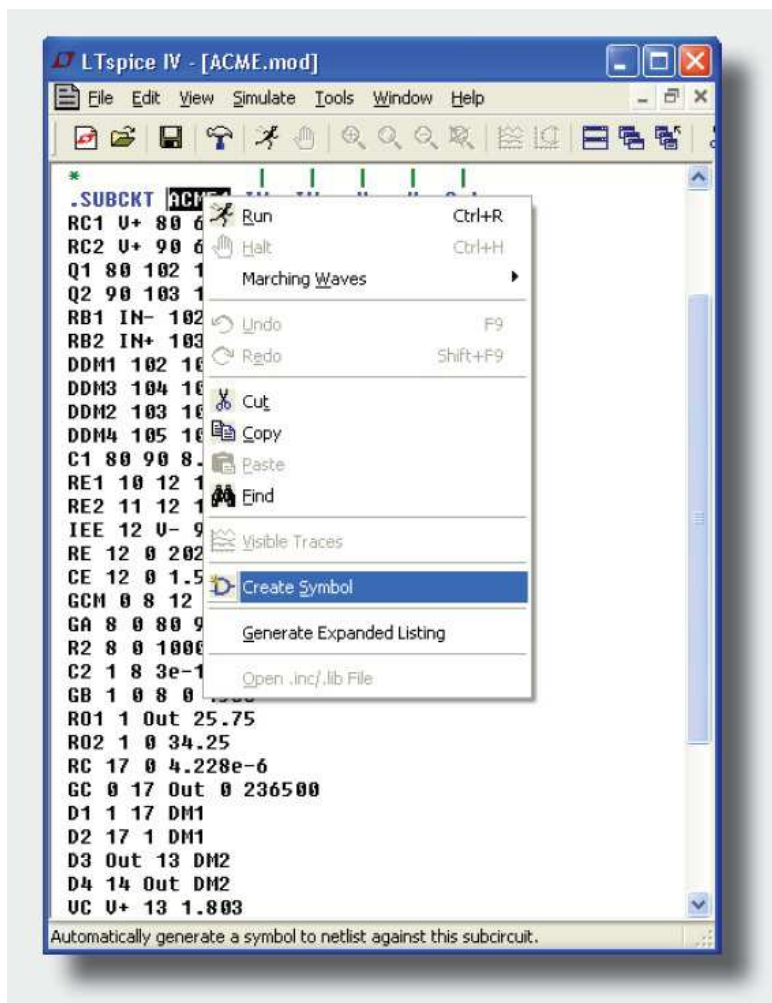
LTspice (<http://www.linear.com/solutions/LTspice>)

LTspice: Simple Steps to Import Third-Party Models

Gabino Alonso - Strategic Marketing ([http://domain.com/doclist/?au=Gabino Alonso](http://domain.com/doclist/?au=Gabino%20Alonso)) May 3rd 2014

It is possible in LTspice IV (<http://www.linear.com/LTspice>) to create a new symbol from scratch for a third-party model but who has the time. Follow these easy steps to generate a new symbol for a third-party model defined in a subcircuit (.SUBCKT statement).

1. Open the netlist file that contains the subcircuit definitions in LTspice (File > Open or drag file into LTspice)
2. Right-click the line containing the name of the subcircuit, and select Create Symbol:



(<http://cds.linear.com/image/createsymbol.png>)

Create Symbol

DOCUMENTATION

Software and Simulation

LTspice Getting Started Guide
(<http://www.linear.com/docs/39806>)

LTspice IV Information Flyer & Shortcuts
(<http://www.linear.com/docs/42781>)

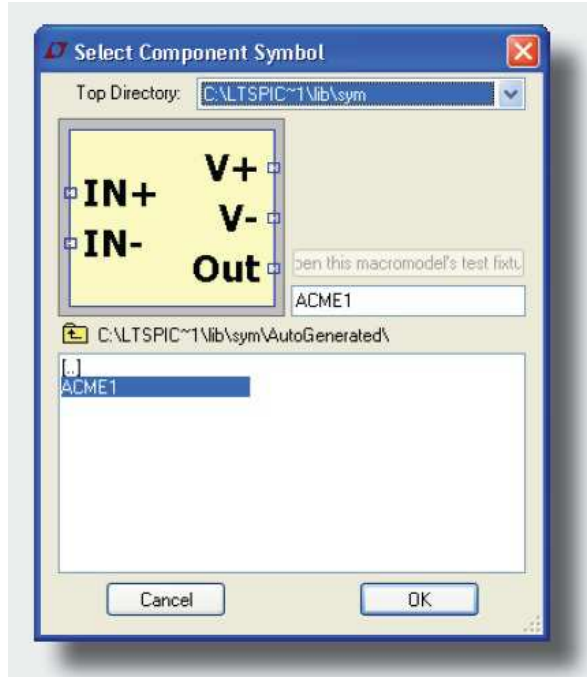
MYLINEAR LOGIN (<http://www.linear.com/mylinear>)

CART (#)

SHARE (#)

3. Edit the symbol if needed and save.

To use the new symbol (and associated third party model) in a schematic, select the symbol from the AutoGenerated directory in the component library (F2) and place it in your schematic:



(<http://cds.linear.com/image/selectsybol.png>)

Select Component Symbol

By using the automatic symbol generation you can focus on your simulations, not creating new symbols. For a more information on how to import third party models that use intrinsic SPICE device (.MODEL statement) see the video at www.linear.com/solutions/1083.

LTspiceIV

LTspice IV (<http://domain.com/ltspace>) is a powerful, fast and free simulation tool, schematic capture and waveform viewer with enhancements and models for improving the simulation of switching regulators. [Click here to download LTspice IV \(http://domain.com/ltspace\)](http://domain.com/ltspace)

View More LTspice Solutions

(<http://domain.com/ltspace>) [LTspice SAR/ADC Driver Interface \(http://domain.com/solutions/4679\)](http://domain.com/solutions/4679)

[Loop Gain and its Effect on Analog Control Systems \(http://domain.com/solutions/5587\)](http://domain.com/solutions/5587)

[View All - List View \(http://domain.com/solutions/LTspice\)](http://domain.com/solutions/LTspice)

© 2014 Linear Technology

[SITE MAP \(HTTP://WWW.LINEAR.COM/SITEMAP.PHP\)](http://www.linear.com/sitemap.php) [SEND US FEEDBACK \(HTTP://WWW.LINEAR.COM/CONTACT\)](http://www.linear.com/contact) [TERMS OF USE \(HTTP://WWW.LINEAR.COM/TERMS.PHP\)](http://www.linear.com/terms.php)

[PRIVACY POLICY \(HTTP://WWW.LINEAR.COM/PRIVACY.PHP\)](http://www.linear.com/privacy.php)

[MYLINEAR LOGIN \(http://www.linear.com/mylinear\)](http://www.linear.com/mylinear)

[CART \(#\)](#)

[SHARE \(#\)](#)